

June 2003

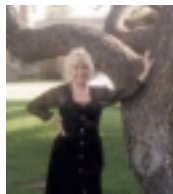
THE ARIZONA ASTROLOGER
The Newsletter of the Arizona Society of Astrologers
ASA Website: www.azastrologers.org

THIS MONTH AT THE ASA

MARTA MORRIS

Friday: SATURN IN CANCER

Saturday: SOLAR RETURNS



Marta Morris has studied astrology since 1979 and has been a member of ASA since 1985. She served on the board for 4 years, from 1995-1999, in the capacities of Membership Chairman, Secretary and Education Director. She is a published author in addition to having self-published her own book on Saturn. She has lectured at the ASA and at Astrological Insights on the Outer Planets, specifically on "Pluto to Pluto," elaborating on the transit of Pluto in Sagittarius as it affects the various generational placements of that planet from Pluto in Gemini to Pluto in Libra, focusing on the trine to Pluto in Leo. Other topics included "Outer space and Inner Space: The Effects of the Generational Planets on Mass Consciousness." She has also taken part in astrological panels at various locations in the Phoenix/Scottsdale area. Currently, she is doing readings at Spice's Discounters in Sedona.

Friday night lecture

Saturn in Cancer is on tap for Friday evening. Marta will compare the past two times Saturn was in Cancer to the upcoming period to extrapolate possibilities. Of course, the outer planets being in different signs will add their impact. The U.S. chart

will be studied as well as charts of those who were born in the previous two periods who are having their Saturn returns.

Saturday: Solar Returns

Saturday's Workshop will be in depth, using previously-learned material and introducing an easy timing method. Marta will elaborate on techniques some may remember her presenting when she was education director. Everyone is encouraged to bring their solar returns (transparencies would be very helpful if you want Marta to go over your return).

Marta will start the day with a look at the US solar return (Gemini rising, equal house). She will divide the remainder of her time among those present. The plan is for this to be a classic WORKSHOP, so come prepared!

Lois Rodden and Zip Dobyns Mourned

Although their flames on the earth plane have flickered for the last time, their stars in the astrological constellation will forever be burning brightly. Lois Rodden made her transition June 5 and Zipporah Dobyns on June 7. Each leaves immeasurable legacies to the astrological world. Lois left

us with thousands of accurate birth and event times and will serve as our invisible mentor to always verify that birth time. Zip opened the asteroid and psychology doors wider for all who cared to enter. For more on these great astrologers, see the websites www.astrodatabank.com (established by Lois Rodden) and www.astrocom.com.

Inside this Issue

Due to the popularity of Dr. Gibson's presentations, extensive write-ups are included in this issue. Therefore the president's letter and other items will return next month.

Dr. Gibson has developed a model for treating people with mental illnesses over the internet. He will be presenting this model to a group of Nobel Prize winners in Italy next month.

Dark matter and Intelligent Planets

Astrology was part of the official American medical school curriculum until the late 18th and early 19th centuries. It is still part of the medical school curriculum in many countries. Astrology was dropped from the medical curriculum with the rise of the Industrial Revolution and the belief that everything had to be proven scientifically before it could be accepted. Dr. Gibson's work is a step forward in bringing astrology into the scientific mainstream.

In science, there is much that we don't understand. In addition, doctors don't cure anything. Doctors won't tell you this. Behind closed doors, however, many of them use astrology or pendulums, work with clairvoyants, talk to spirits, and employ other kinds of psychic techniques.

Planets show personality in their movements. For example, Uranus travels on its side, and its movement is different from that of other planets. Some planets travel fast, and some travel slowly.

Gibson's assumption, like that of the ancients, is that the sky is intelligent and we are the product of that intelligence.

If we took all the physical mass of the universe, it would add up to less than 2 percent of what's there. The rest is dark matter. Dark matter excludes atoms, electrons, neutrinos, and any other bodies scientists have identified. It is not anti-matter, which is a type of matter. Scientists don't know what dark matter is, but it is logical that so much mass has to affect us. In other words, we are missing a lot of information that could give us clues to things astrological. A good astrologer on a good day is about 90 percent accurate. There are things in the chart we just don't see. Most of the universe, including our bodies, is invisible.

In astrology, the sky thinks and feels. Something we can't see acts on the sky and moves planets around. Gravity isn't the whole story. The other influences are called temporal forces. They create temporal energies that are related to planetary movements.

When something happens on earth, there is a reaction in the universe. Shortly after the explosions occurred on Hiroshima and Nagasaki, there was a great increase in the number of UFOs seen around earth. Humans had gotten the attention of the local universe.

Mental Illness: Why?

How does astrology work? Whatever explanation we come up with will be about 10 percent accurate, based on the 10 percent of information we have.

Likewise, we don't know where mental illness comes from. Is there some influence outside of us that can nudge us toward having a mental illness? Our knowledge of where it comes from is about 25 percent accurate. One percent of any population, anywhere in the world, will become schizo-

phrenic, and 10-15 percent will be depressed enough to need medication. The cause is not necessarily genetic; often one pair of a twin will be healthy and the other will be mentally ill. About 10 percent of the population will take pills and become addicted; the other 90 percent won't get addicted, no matter how many pills they take.

What population of the U.S. is mentally healthy? 92 percent, according to the National Institutes of Mental Health. Most people, though they have problems, do not have a serious mental illness. Of those that are unhealthy, only about 5 percent will ever get help. Specific planetary markers are associated with specific mental illnesses. They can be plotted at birth. Episodes of mental illnesses occur in clusters. As a psychiatrist, Gibson will get a lot of depressed people coming into his office around the same time. Depression can be homicidal or suicidal, or both. It's a potential emergency. He has developed software to determine the risk level.

The Research

Gibson used data from 2,000 patients to develop a computer model correlating astrological factors to mental illness. He found that declination as well as longitude is a potent influence. He also used planetary eclipses, which occur when two planets are conjunct and parallel at the same time. When you look at them in the sky, they appear to overlap. Certain illnesses tend to coincide with planetary eclipses, especially those involving Mercury and Mars. For example, Mars-Pluto eclipses are common with depression.

He also noticed that sometimes he had to look at multiple planets to pick up illnesses. Some illnesses are associated with 5 or 6 planets doing certain things within about 2 degrees of one another. This went against everything he was taught in astrology.

In his research, Gibson used only the Ptolemaic aspects: conjunction, sextile, square, trine, opposition. He did not use inconjuncts. He found that

using declinations added a great deal of information, rounding out the picture by adding three-dimensionality to the planets. Declinations refer to the relative positions of planets above or below the celestial equator; those on the same side are called parallel and are traditionally said to act like a conjunction. When planets are on opposite sides of the celestial equator they are called contraparallel and are considered to act like an opposition. An orb of 2½ degrees proved to be statistically significant. High declinations (21+ degrees) and extremely high declinations (23+ degrees) show up in mental illness.

Planets act in groups to influence human behavior. One configuration is the "triangle elevation," found when 3 planets are within 2½ degrees of one another on the same or opposite sides of the celestial equator. Four planets in a similar configuration are a "quad," five planets are a "plenary," and six planets are a "band." Mental illnesses show up when you get these configurations.

Temporal energy is associated with the movement of several planets at once, like beads on a string. It is related to the clustering of mental illness episodes at certain points in time. A "grand elevation" occurs when one planet is 6 times more active than anything else going on in the sky. "Elevation by proximity," related only to parallels and contraparallels, occurs when a planet gets to within 30 minutes of an aspect with another. This tight conjoining of forces occurs often in mental illness.

The average person has three risk markers for mental illness. Five to six are slightly above average. Seven to nine are above average. Ten to twelve are high risk. Thirteen to seventeen are very high risk. Over 17 shows extremely high risk.

Planetary Factors

In his computer model, Dr. Gibson looked at five of the most prevalent serious mental illnesses: attention deficit disorder, major depression, addictions, anxiety disorder, and schizophrenia.

His research confirmed the view of the ancients that some planets were benefic, some were malefic, and some were neutral.

Jupiter and the Sun, if well aspected, are associated with good mental health. People with mental illness tend to have the Sun poorly aspected. Sun-Mercury conjunctions are associated both with depression and with spiritual potential. The malefics—Mars and Saturn—tended to be associated with chaos. Some chaos is normal, but too much is unhealthy. The neutrals—Mercury, Uranus, Neptune, and Pluto—didn't seem to do anything, at least on the surface.

Karmic Potential

Why will one twin get mental illness and one will remain healthy? If it's not genetic, it must be karmic. There are 5 kinds of karma: planetary, archetypal, stewardship, personal, and divine. Planetary karma, which is about 10 percent of the whole, has to do with the planet you're living on, the political and economic situation you're born into, your family heritage, etc. You can't change planetary karma, but then again, you're not always born on the same planet.

Archetypal karma is related to the fact that human souls are created according to 22 different patterns, which define what a person is likely to do lifetime after lifetime. These closely match the Major Arcana of Tarot.

Stewardship karma has to do with the things you own. We tend to own the same kinds of things over and over, and we add to them each lifetime.

Personal karma refers to the things that are characteristic of that soul. Souls have similar tendencies over time. For example, some souls will tend to marry and others will not. Ninety percent of our karma, however, is what Dr. Gibson called divine karma, and it is decided by a higher being who is in charge of guiding us. Divine karma is what we live out, what our patterns will be over time. All our other karmas fall under this one.

Dr. Gibson has developed a way to measure karmic energy. Jeffrey Dahlmer, for instance, had high negative karmic energy, extremely high low positive karmic energy, and very high negative Saturn energy. His risk markers for mental illness were above 17.

Dr. Gibson has put his findings into a software program he calls The Inner Sky. It is available for purchase, from his website, or call NorthStar College for information at 480-429-0009.

Saturday lecture May 17, 2003 Dr. Mitchell Gibson: Astrology and the Paranormal

It won't surprise anyone who was at the lecture to learn that Dr. Gibson is a Virgo. He began his presentation by stating that 67 percent of scientists consider ESP to be an established fact. A group of CEOs whose companies have remained profitable for the past 5 years tested higher than normal for psi ability.

To psychic researchers, the term "AOL" stands for "analytic overlay," or the mechanism by which the conscious mind blocks paranormal ability. Everyone is connected, and we all know what is going on at an unconscious level. But when a signal hits that unconscious level, the ego takes the signal and analyzes it according to what the ego already knows. Gibson demonstrated the process by having the audience guess what was on his next powerpoint slide. Several people came up with components of the answer, such as "yellow" or "round," but none guessed that the picture would be of gold coins. Some guessed a flower, which was on the next mystery slide.

Project Stargate has been a top-secret government program for the past 15 years. Its purpose is to study how people develop spiritual potential; in other words, how our dormant potential can be activated and made useful. These researchers discovered the AOL and turned it into a system they called remote sensing. To be a remote viewer

for the U.S. Army, where most of this research has been done, a person must be at least 80 percent accurate. They have become so good that they can remote-view thoughts. Thoughts are real things and can be influenced. Other findings of this research are classified.

Developing paranormal abilities

How can spiritual experiences be brought to the surface? Traumatic events occasionally produce permanent spiritual changes. Drugs can allow temporary clairvoyance, but they are damaging to the person who takes them. Some people are genetically equipped to be psychic. Two genes have been found: Psi A and Psi B. Psi A allows psi potential to be active and useful. Psi B suppresses Psi A. Psi B is also linked to an oncogene (any cancer-causing factor). If a person is exposed to a 50-60 Hz magnetic field, the functioning of Psi B is enhanced. All of our wall sockets and power lines are 50-60 Hz. Our environment suppresses Psi A.

Negative induction—exposing a person to 7.8 cycles/second—allows a person to have clairvoyant experiences. We don't often lock into this frequency. Gibson sells meditation CDs that are engineered to help people lock into these frequencies.

Deep hypnosis and trance work are ways of getting to deeper levels of consciousness. Dr. Gibson uses EMDR, which stands for Eye Movement Desensitization and Reprocessing Therapy, as a tool for spiritual development and understanding astrology better. When we dream, our eyes move. When rapid eye movement is stopped, by waking a person up every time it starts to happen, a person will sleep but not restfully. If rapid eye movement is prevented for a long time, a person will deteriorate physically and emotionally. Eventually they will have psychotic episodes and then die.

Eye movement processes away stress and all the irritations that build up over the course of a day. In EMDR therapy, a person focuses on a traumatic event and uses a signal that goes into the brain and

stimulates eye movement, thus allowing the brain to process the trauma much faster.

Spiritual training is the traditional method, in which a guru teaches the pupil to identify and bring up spiritual potential. Lucid dream work is another method. People can be trained to wake up inside their dreams and consciously alter reality. Direct transmission, or paradosis, is the process by which spiritual energy is passed to another. Jesus did this with his disciples, enabling them to exercise his powers, including healing and raising the dead. Near death experiences actually change the electrical charge of the body and sometimes enable people to be clairvoyant.

Finally, there are astrological influences. Gibson did not discuss these.

Four types of spiritual potential

- Mystical potential is the ability to attain and manifest signs of ultimate union with the creator.
- Psychic healing is the ability to effect cures by mental or spiritual means alone.
- Psychic potential is the ability to gather information and affect reality using forces and senses outside the normal function range. Edgar Cayce is an example.
- Mediumship is the ability to facilitate communication between the spirits of the living and the spirits of the deceased.

Spiritual potential scores range from 1 to 180. Extraordinarily gifted people score between 150-180. The average person scores around 100.

Gibson used Nostradamus as an example of a person who had extraordinary spiritual potential. Born 500 years ago (Dec. 15, 1503, 6 am, St. Remy, France), Nostradamus was a physician, herbalist, astrologer, occultist/kabbalist, and prophet. He was Jewish. His father and grandfather both studied the kabbalah and turned him

toward spirituality at an early age. During the plague, Nostradamus used a crude form of penicillin to heal people; nevertheless, he could not save his own family.

According to Gibson's system, Nostradamus scored outstanding in mystical potential, superior in healing potential, extraordinarily high in psychic potential, and outstanding in mediumship. The extraordinarily high range for psychic potential is called "Deiphic," and Nostradamus was called the "Prince of Prophets." He predicted the time and manner of the death of France's King Henri II and pleaded with the king to avoid the joust in which he was to lose his life. The king, of course, ignored Nostradamus and died an agonizing death. Nostradamus was accused of sorcery and nearly executed.

To write his quatrains, Nostradamus used a 60-

year space-time cycle known as a temporal window. By learning the configuration of planets associated with the temporal window, he predicted events accurately. He predicted the Great Fire of London, airplanes, and the atomic bombings of Hiroshima and Nagasaki. About 80 percent of his prophecies have come true.

Nostradamus, Michaelangelo, and Leonardo DaVinci all knew one another. Besides submarines and airplanes, they talked about parallel universes. Some things would come true in some dimensions and not in others. Nostradamus saw the Kennedy assassination at the end of a temporal window.

Dr. Gibson discussed several well-known psychics and mystics, including Edgar Cayce, Rasputin, Sybil Leek, and Sai Baba. Pisces is the most common ascending sign found in the charts of such people.

NOTICE: Last month's presentation by Dr. Mitchell Gibson was one of the most popular in years. We are printing the write-ups in their entirety. The president's letter will reappear in the next newsletter. Please check the website for further information regularly.

The Arizona Society of Astrologers meets on the third Friday and following Saturday of each month.

**The usual meeting times are at
the Scottsdale Senior Center, 7375 East 2nd Street, Scottsdale, AZ 85252
Friday 7:00-9:30 pm Admission: Members \$4, Non-Members \$10
Saturday 1:00-4:30 pm Admission: Members \$10, Non-Members \$15**

MEMBERSHIP: First time member: \$33.00 the first year, then \$30.00 per year thereafter.