



RULERSHIPS: WHAT ARE THEY?

by Douglas Noblehorse

When we study astrology we first learn the basics - the meanings of signs, houses, planets and aspects - which is no small undertaking! But then the hard part begins... how to assemble and make sense of it all. This process can take years for many of us... years of buying and reading books alongside years of actual horoscope interpretation for family, friends and eventually clients.

Mastering this kind of synthesis is an achievement for anyone who is seriously interested in astrology, but it is only the first step in becoming fluent in the language of the horoscope. At this point in our study we know and can articulate what for instance

best. So how does the student of astrology penetrate to the deeper levels of meaning hidden in the horoscope?

This is where the doctrine of astrological rulerships comes in to play. Modern astrologers by and large understand the notion of rulership through the idea of *dispositorship*. Simply put the planet that rules the sign of a particular planet or point *disposes* or *colors* that particular planet. For instance in the example above, the Moon would disposit Jupiter (as Cancer is ruled by the Moon) while Mars would disposit the Sun in Aries. Somehow by virtue of this relationship the disposing planet *molds* or *shapes* the outcome of the disposed

Planetary rulers are not simple affinities...

Jupiter at 20° Cancer in the 1st house square the Sun at 20° Aries in the 10th house means (*i.e.* conflicts with the father over education, etc.)... but is real life that simple or black-and-white? Even if you can give voice to the various manifestations of such a planetary combination (which if overdone can confuse and alienate your client) the ensuing character description is one-dimensional at

planet - the Cancerian Jupiter would be more *emotional* (Moon) than a normal Jupiter; the Arian Sun would be more *aggressive* and *confrontational* than a normal Sun.

This explanation however doesn't address the fundamental question that appears - what's the difference between Jupiter being in Cancer and Jupiter being disposed by the Moon? In other words, what's the difference between a planet in a sign and

HERMES HALF-HOUR



the relationship between the planet and the ruler of the sign? Jupiter in Cancer being disposed by the Moon supposedly makes Jupiter more *feeling-oriented* and *protective*; how is this different from Jupiter simply being in Cancer? And if both astrological patterns (*planet in a sign* and *planet's relationship to sign's ruler*) give us the same information, why would we need to examine both patterns?

To answer that question, we have to define what rulerships really are as opposed to what modern astrologers have assumed them to be.

Planetary rulerships are *not* simple affinities (as in the conception of modern rulerships, *i.e.* Uranus rules Aquarius, Neptune rules Pisces, Pluto rules Scorpio... or Aries... - all simple affinities) - although affinities do form the *foundation* of rulerships. However, rulerships are much more complex than simple affinities. As a result, we will keep to the rulerships for the traditional 7 planets - Moon, Mercury, Venus, Sun, Mars, Jupiter

and Saturn. Likewise, our discussion of aspects will be limited to the classical five aspects - the conjunction, sextile, square, trine and opposition.

The modern idea and meaning implicit in the word rulership

(coming from the Greek word *arkhon*) implies notions of *command* and *control*, of an *authoritative top-down relationship* like that between king and subject, employer and employee, general and private, even parent and child! However, when one examines the historical texts

Signs show characteristics, but do not signify things. As a result, signs do not rule and therefore are not the lord of things. For instance, Scorpio does not signify sex; Scorpio is sexual however. Libra does not signify relationships; Libra though can be quite relationship-oriented.

that established horoscopic astrology one quickly realizes that the modern idea of “*authoritative command and control*” was *never* intended by the founders of horoscopic astrology.

The word commonly used in Greek texts to denote a planetary “*ruler*” was *oikodespotes*, a compound word which can be broken down into “*oikos*”, meaning *domicile* or *household*,

HERMES HALF-HOUR



and “*despotes*”, meaning *master* or *dominant planet* as it was used by Vettius Valens in the 2nd century CE. So *oikodespotes* means *dominance in a domicile* or *household master*.

But why does the domicile concept play a central role here? Besides the obvious connection to the astrological term house it’s important to realize that the Greek domicile or household paradigm plays a central role underlying the concepts found in horoscopic astrology which are still used today. Ancient Greek households were set up much

like Western households found today, with one major addition. Greek cities didn’t necessarily have standalone commercial outlets (what we might call stores) - if you wanted to purchase a particular product (i.e. some new pottery jugs, new clothing, wine, etc.) you went to the person’s *domicile* or *household* who specialized in that product.

For instance, recent scholarship has come to the conclusion that taverns and brothels were among the business enterprises that were actually conducted from the owner’s domestic household! To this end, specific rooms in Greek households were devoted to conducting commercial business - some with their own dedicated access to the outside world! And if you’re conducting business, you’ll need someone to oversee or take charge of the day-to-day commerce.

In astrology, this person is signified by the *Domicile Lord*, or sign ruler as it is somewhat misleadingly termed in the

modern era.



In astrology, a planet takes a domicile in a specific zodiacal sign (or image, i.e. the image of the Ram is the sign of Aries) with which it shares a fundamental affinity. Robert Schmidt of Project Hindsight,

who among others is translating what remains of the original Greek texts into



English has settled upon the translation “*domicile lord*” to denote what modern astrologers understand as a planetary ruler. *Lord* and *lordship* are therefore the terms we will use henceforth in this publication in place of ruler and rulership.

Finally, the ancient texts are full of references to not only planetary lordships, but other kinds of lordships as well, including *exaltations*, *trigon/triplicities*, *confines/terms*, *trigonals* and *monomoira*. What are all of these? How do they manifest? And how do they differ from normal lordships? Is one kind better than another, more powerful, more important? These are the issues addressed in this publication.

WHY USE LORDSHIPS?

Why should we use lordships at all? What kind of information do we access using lordships? Astrologers know that:

- Planets supply information regarding motivation (*i.e.* Jupiter wants to *expand*, Mars wants to *make war*, Venus wants to *party*, etc.);
- Signs show characteristics (*i.e.* Scorpio is *intense*, Virgo *precise*, etc.);
- Houses (along with planets) show areas of life (*i.e.* Venus generally and the 7th House specifically are *relationships*,

In signifying areas of life, planets are called general signifiers. In a general sense Venus signifies relationships for everyone. However, to find the astrological factor that specifically signifies relationships in a particular horoscope the astrologer looks to the house - for the subject of committed relationships it is the 7th, for casual relationship the 5th, for platonic relationships it's the 3rd, for social and professional relationships it's the 11th, etc.

HERMES HALF-HOUR



- the Moon generally and the 4th House specifically are *family matters*, etc.); and
- Aspects reveal relative ease of relationship (*i.e.* oppositions *difficult*, trines *harmonious*, etc.)

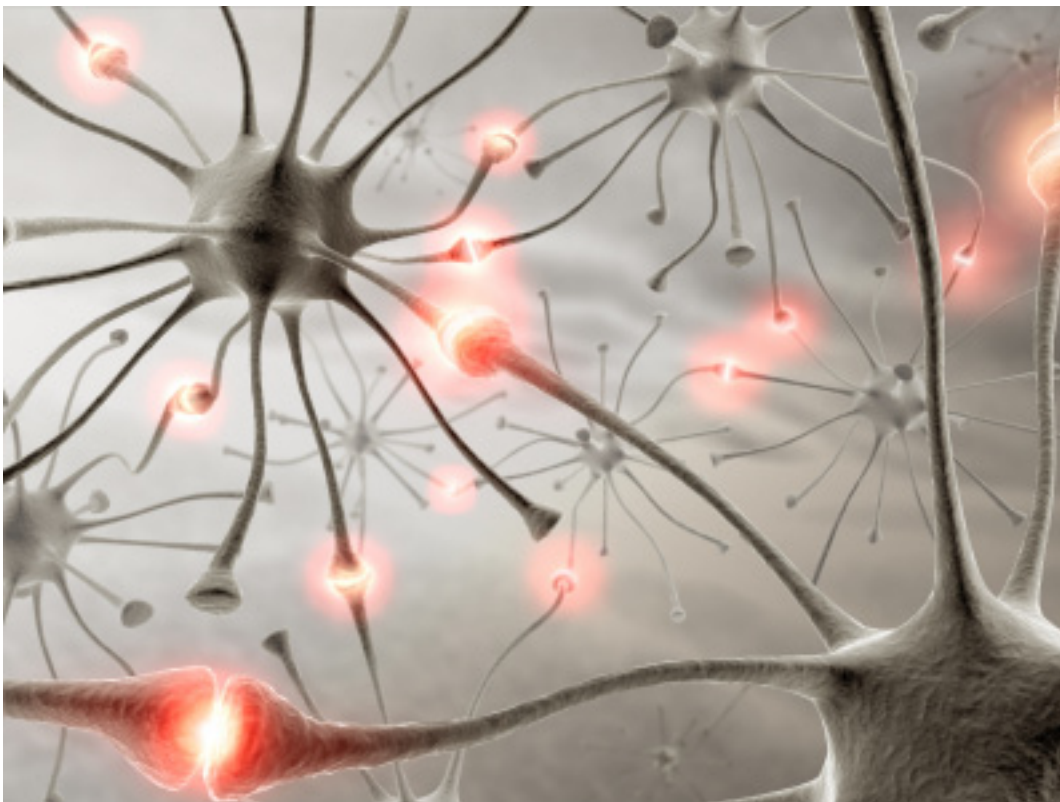
What happens though when a pair of planets are *not* in aspect? For instance what if the Sun was at 2° Aries and Mars was at 20° Cancer? These two are *not* in aspect (unless you're using heavily-conceptualized, little-used minor aspects and/or humongous orbs); what is the nature of their relationship, if any? Is this example simply a matter of unrelated psychological impulses - the *idealistic, assertive* Sun in Aries manifesting with but no relationship to an *introverted,*

hypersensitive Mars in Cancer? Are these planets aware of each other, yet simply do not interact leaving the native caught in the middle between impulses at cross-purposes (implied by the natural square between Aries and Cancer?)

If these last two questions are answered in the affirmative, then one would expect human life and motivation to be one-dimensional, as many people have few proper aspects in their horoscopes. Yet, real life is not this way, despite some people's best efforts at being as shallow as possible.

Humans are inherently social animals. We spend our time and energy establishing

and maintaining contacts and networks with others, much as our brains are made up of neurons whose function is to form and maintain synaptic contacts and neural networks with other neurons, giving rise to human consciousness. Shouldn't the



HERMES HALF-HOUR



astrology we practice, which is supposed to mirror and describe (*as above, so below; as below, so above*) human life form similar networks?

Horoscopic astrology does just that by providing astrology with *a networking system for the movement and exchange of energy and/or information*. This in turn implies that every planet in our horoscope is in relationship to every other planet in our horoscope, for good or ill.

DOMICILE LORDS

As discussed above, Domicile Lords are the rulership system most familiar to today's astrologers. However, rather than a planet being a *dumping ground* or *outlet* (*dispositor*) for a sign or another planet,

the Domicile Lord in fact takes on the responsibility for *providing resources* for its domicile sign. Rather than acting as an authoritative ruler, the Domicile Lord acts more like a *steward* or *superintendent* - like an *apartment building superintendent*. Of course, the Domicile Lord provides according to its own nature - what Saturn supplies to Capricorn and Aquarius is going to be *austere, stark* and *simple*. In contrast, Jupiter's provisions will be *lush, extravagant* and *over-the-top*. If a planet is in Capricorn and wants to sleep, Saturn will provide a *simple* blanket or mat on the floor. Jupiter will provide an *elegant* four-poster bed, while Mars might give up an *Army* cot.

When a planet is in the sign opposite its Domicile it is said to be in Anti-Domicile,

Sun is Domicile Lord of Leo,
Moon of Cancer,
Mercury of Virgo & Gemini,
Venus of Taurus & Libra,
Mars of Aries & Scorpio,
Jupiter of Sagittarius & Pisces,
and Saturn is Domicile Lord
of Capricorn & Aquarius.

HERMES HALF-HOUR



or detriment as later Medieval astrologers called it. The planet then is *wild* and *ornery*, *contrary* to its innate nature and *takes on no responsibility whatsoever*. It's like when you go to Las Vegas... "*what happens in Vegas, stays in Vegas!*"

EXALTED LORDS

Exaltations are an ancient part of astrology; accepted astrological wisdom today is that the Exaltations date from the Babylonian period which predates the establishment of horoscopic astrology by the Greeks. However, on closer examination to the actual Babylonian texts one realizes that the Babylonians did not place planetary exaltations in quite the same places or signs that we're used to. And as Exaltations are intimately connected to the Hellenistic notions of Domiciles, Joys, and Sect as seen in the Thema Mundi, some scholars suspect that the Exaltations as we know them today actually derive from the Hellenistic period.

Simply put, exaltation means to "*raise up*" or "*lift up on high*." An Exalted Lord therefore is *honored* or *glorified* by its sign. In

the Greek household paradigm the Exalted Lord likely corresponds to the *owner* of the domicile or the *head of household* - which is *not* the same as the steward/superintendent Domicile Lord.

When a planet is in the sign opposite its Exaltation it is said to be in Depression, or fall as later Medieval astrologers called it. The planet then is *hampered*, as it is said to be "*cast down*" or *obscured* by being in a *hole* or *hollow*. This planet finds it *difficult to operate* as its *options are severely limited*. As the state of a planet is paramount in determining how well it fulfills its Lordship duties, a planet in Depression is *unable to serve as a Lord*, especially as a Domicile Lord.

Sun is Exalted Lord of Aries,
Moon of Taurus,
Mercury of Virgo,
Venus of Pisces,
Mars of Capricorn,
Jupiter of Cancer and
Saturn is Exalted Lord of Libra.

HERMES HALF-HOUR



TRIGONAL LORDS

Trigonal Lords are simply the Domicile Lords of signs that are *trigonal* (the original term for *trine*) to the sign under scrutiny. For example, if you're examining Aries, the Sun and Jupiter are Trigonal Lords for Aries because the Sun is Domicile Lord of Leo and Jupiter is Domicile Lord of Sagittarius. Leo and Sagittarius are trigonal to Aries. Of course, in this case we ignore the Sun as Trigonal Lord of Aries as it is already the Exalted Lord of Aries.

Trigonal Lords are mentioned by an ancient Greek astrologer named Serapio, who seems to almost mention them in passing. He does point out that "*some*" astrologers use them, implying that they were not universally used by ancient astrologers. Of course, that's

no different from astrologers today who use their own individualized grab bag of techniques!

Under certain conditions (*see Example Chart section below*) Trigonal Lords step in to *assist* the original Domicile Lord in the discharge of his or her duties. These Trigonal Lords act as *colleagues* or *associates* of the Domicile Lord - much like a building superintendent today might call upon a colleague for assistance at times. However, depending on the nature, condition and position of the Trigonal Lord, he or she might have *ulterior motives* that either *support* or *interfere* with the original Domicile Lord's agenda.

If you perform a bit of astrological algebra, you can combine this Lordship scheme into two planetary groupings: The Sun, Moon, Mars and Jupiter versus Mercury, Venus and Saturn. These planetary groupings correspond to the idea of planetary Friends and Enemies as found in Jyotisha or Indian Astrology (Vedic is somewhat of

Trigonal Lords:
Fire-like signs belong to the
Sun, Mars and Jupiter;
Water-like signs belong to the
Moon, Mars and Jupiter;
Air-like signs belong to
Mercury, Venus and Saturn,
as do Earth-like signs.

HERMES HALF-HOUR



a misnomer...) It's a matter of historical record that Jyotisha or Indian Astrology was heavily influenced by Greek astrology in the first centuries of the Common Era - thus, a path for the transmission of this particular doctrine from Greece to India is definitely suggested. The Indians of course have molded and refined this doctrine over the last two millennia to suit their particular astrological and cultural needs. If they have found it useful, it follows that the original Trigonal Lords are also found to be useful.

CONFINE LORDS

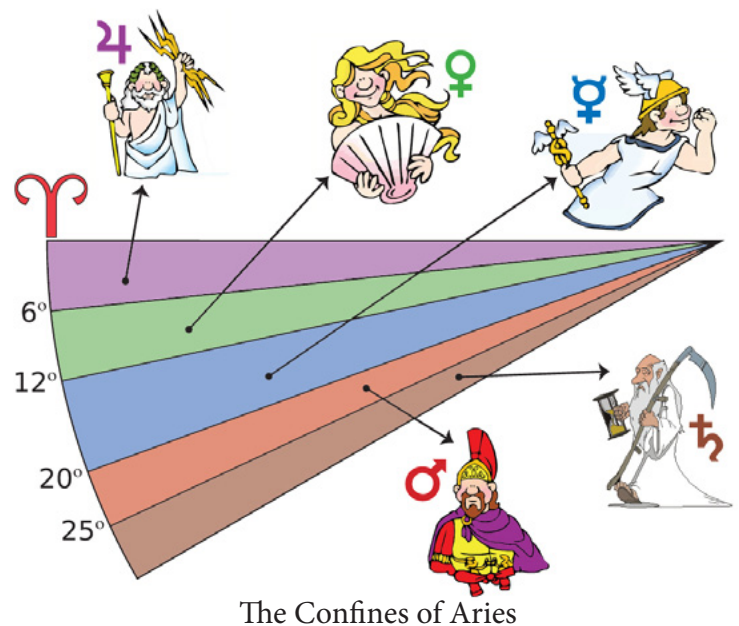
Confine Lords are what Medieval astrologers somewhat misleadingly called the Terms According to the Egyptians - where the Egyptians in question were actually cosmopolitan members of the Hellenistic Empire (either Greek or Roman) who could be any nationality, not just Egyptian or Greek. They are *irregular* divisions into five regions of each sign of the Zodiac. Lordships are given *only* to Mercury, Venus, Mars, Jupiter and Saturn. The Lights - the Sun and the Moon - do *not* act as Confine Lords. (See the *Confine Lord table in the Appendix.*)

Confine Lords supply a planet or astrological point with *operating principles* that provide a measure of

guidance for the planet. For instance, Mars in Gemini will denote someone who devotes a lot of *time* and *energy* to *talking* and *communicating*, with an emphasis on *critique* and *sarcasm*. However, if this Mars were in the Confines of Saturn as opposed to being in the Confines of Jupiter, the Mars in Gemini *sarcasm* would be more *pronounced*, *harsh* and even *cruel* in the Saturn confines than in the *accepting*, more *joyful* confines of Jupiter where the *sarcasm* takes on a *lighter*, more *comical* tone.

MONOMOIRA

These are Degree Lords where each portion (degree) is assigned a planetary representative. (See the *Monomoira table in the Appendix.*) There are two schemes for assigning Monomoira Lords. The classical scheme involves assigning the first degree





of the sign to the Domicile Lord, with each subsequent degree being assigned in descending order to the next planet in Chaldean Order. The Chaldean Order is based on apparent speed of the planet as such: Saturn, Jupiter, Mars, Sun, Venus, Mercury, Moon. For instance, the first degree (0 degrees up to 1 degree) of Scorpio is assigned to Mars, the second degree to the Sun, the third degree to Venus, and so on.

An alternate scheme based on Triplicity Lords or Rulers also exists; it seems to originate from the Medieval period of astrology when scholars were doing their best to re-create and understand the original Greek astrology. It's a stretch, but one might also be able to at least draw a philosophical connection between Monomoira Lords and later degree interpretation structures like the

Sabian Symbols, among others.

In other lectures I've tied the immortal part of the Soul as posited by Plato to the astrological Ascending Degree. Following that line of thought I see the Monomoira Lord of the Ascending Degree as an *imprint*, *mask* or *avatar* for our Immortal Soul. This approach is supported by the term *monomoira* itself - *mono* of course meaning *one* and *moira* carrying the meaning of *part* or *portion* (degree) through to the concept of the nativity's *participation in Fate or destiny*. In fact, the *Moirae* refer to the three Fates in Greek myth - **Clotho** (whose responsibility was choosing when people are born - a clear connection to the Ascending Degree and Ascendant), **Lachesis** (who measures the span of a life; **Lachesis** also assists souls in choosing their next life, assigning them lots in the process) and **Atropos** (who chooses the manner and time of death.)

TRIGON LORDS

Not to be confused with Trigonal Lords, Trigon Lords are what Medieval astrologers called Triplicity Rulers, a special set of three planets assigned to each Element that also takes Sect into account. One planet corresponds to the Diurnal sect, one planet to the Nocturnal sect, and one planet is Common or Participating.



HERMES HALF-HOUR



The condition (as found in the nativity) of Trigon Lords for a particular planet or point in the chart shows *how well the native takes advantage of motivation*. As an analogy, you might have the baddest sailboat in the world, but if there is no motivating power (*i.e.* no wind) you're not going anywhere no matter how beautiful your boat is. Only if the winds are favorable will you make significant progress! A universal technique in classical astrology is to examine the Trigon

Lords of the Sect Light (Sun for a *diurnal* or *day* chart with Sun *above* the horizon; Moon for a *nocturnal* or *night* chart with Sun *below* the horizon). If they are favorably placed (favorable signs, angular houses, with the benefics Venus and/or Jupiter) then it's reasoned that the horoscope as a whole is *well motivated* and the native will achieve *significance*. If not, then things will be more difficult (but not insurmountable) for the native.

Aries, Leo, Sagittarius (Fire-like):
Sun (diurnal), Jupiter (nocturnal)
Saturn (common participating)

Taurus, Virgo, Capricorn (Earth-like):
Venus (diurnal), Moon (nocturnal),
Mars (common participating)

Gemini, Libra, Aquarius (Air-like):
Saturn (diurnal), Mercury (nocturnal),
Jupiter (common participating)

Cancer, Scorpio, Pisces (Water-like):
Venus (diurnal), Mars (nocturnal),
Moon (common participating)



Trigon Lords also lead into forecasting Time Lord procedures; the life of the native can be generally separated into two, possibly three periods of life. If you have a diurnal chart, the diurnal Trigon Lord will hold sway over the first period of life, while the nocturnal Trigon Lord takes up the second period of life. The common participating Trigon Lord (as stated by its nomenclature, *participating*) works with *both* diurnal and nocturnal Trigon Lords *throughout* the life. A thorough discussion of this aspect of Trigon Lords is beyond the scope of this article however.

IN SUMMARY

- **Domicile Lords** act as *stewards* or *managers*; responsibilities include *providing resources*.
- **Exalted Lords** act as domicile *owners* or *overseers*; they can participate with the Domicile Lord in the management of the domicile.
- **Trigonal Lords** are colleagues of the Domicile Lord and *assist* in the management of the domicile, but they have their *own agenda*.
- **Confine Lords** show *fundamental operating principles* or *guidelines*.
- **Monomoira** or **Degree Lords** *stamp individual degrees* with a planetary

identity.

- **Trigon Lords** are sect-based Element Lords that show a planet's *ability to take advantage of motivation*.

EXAMPLE CHART

The example chart used to illustrate the different Lordships discussed in this article is the marriage chart for Prince William and Kate Middleton, set for April 29, 2011 at 11:19 AM GMT (the pronouncement of man and wife) in London, England. The chart is tropical and uses Whole Sign houses. The Ascendant is 15 degrees Leo 34.

DOMICILE LORDS, EXALTATION LORDS AND TRIGONAL LORDS

These three lordships are involved with the management of domiciles or houses, as determined by the sign at that place (sign on the cusp.)

In order for a planet to act as a Domicile, Exalted or Trigonal Lord for a particular domicile or house, it first must be able to *see* that house. What does this mean? If a planet *sees* a domicile or house, it means that that planet is *in a classical or traditional aspect* by sign (conjunction, sextile, square, trine or opposition) to the domicile or house.

For instance, Mars is Domicile Lord of

HERMES HALF-HOUR



Aries, but if Mars were in Virgo, Taurus, Scorpio or Pisces (all inconjunct/quincunx or *in aversion* to Aries) he *cannot see* Aries and therefore his ability to manage or oversee the domicile of Aries would be *hampered* and *negated*. It's as if the Domicile Lord were *not at home* to manage the household affairs! When this happens for a particular domicile the astrologer then looks to the Exalted Lord (if any) and its placement and condition. In the above example we would look to the Sun as Exalted Lord (Sun is exalted in Aries.) However, if the Sun likewise were in Virgo, Taurus, Scorpio or Pisces then the Sun cannot manage Aries. Then we turn to the Trigonal Lord(s) for further prospects for domicile management. Since we're looking at Aries (and have already dealt with the Sun) then the Trigonal Lord that would qualify for Aries would be Jupiter (who is the domicile Lord of Sagittarius, trigonal/trine to Aries.)

Now suppose that Jupiter likewise were in Virgo, Taurus, Scorpio or Pisces and therefore *unconnected* to the domicile Aries. Now we enter into the realm of speculation and supposition - some astrologers have posited that the Lights (preferably the Sect Light) - as archetypal Royalty - step in to take up the slack. In our Aries example the Sun has already been ruled out, which leaves

the Moon. Now finally, suppose the Moon were in Virgo, Taurus, Scorpio or Pisces and therefore unconfigured to Aries. That leaves the Aries house *completely unmanaged* (assuming there are no other planets resident in Aries) - and would suggest that in the native's experience the affairs of that house are *completely unmanaged*.

If you have planets that are Lords of a house by definition, but *do not see* (*are not in aspect by sign to*) the house, you cannot simply ignore the unconfigured Lord. The native, when confronted by issues signified by the domicile or house, will *flounder* a bit at first in dealing with those issues (because the Lord doesn't see the house) before realizing it isn't working and moving on to the other substitute Lords.

Finally, as mentioned above, a planet that is in its Depression (in the sign opposite its Exaltation) cannot act effectively as a Lord.

ROYAL MARRIAGE CHART

Leo is rising, so the Domicile Lord is the Sun. The Sun is in Taurus in the 10th, a pivotal/angular house. This is a classical aspect to look for in the charts of royalty - of course, an astrologer would want the Lord of the Ascendant (Leo) in the *highly visible, respected* 10th house! This is a strong

HERMES HALF-HOUR



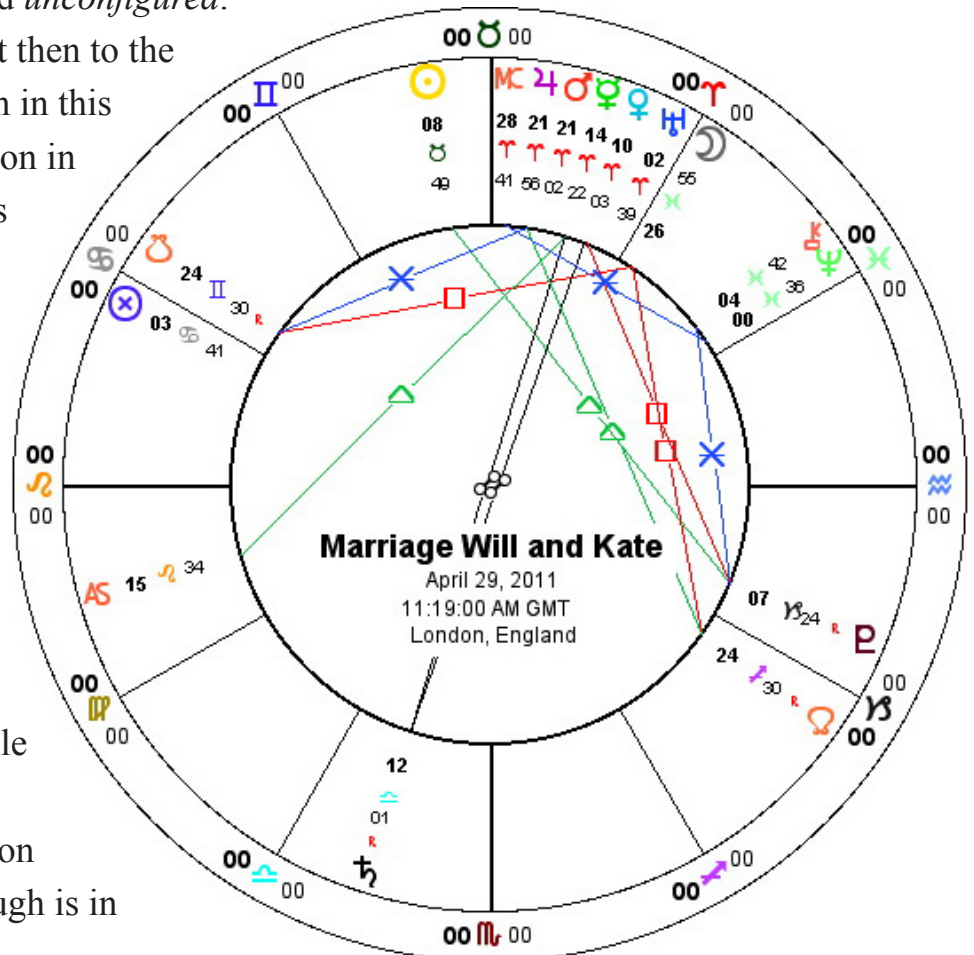
position; there is no need for additional help from the Trigonal Lords (although both Trigonal Lords Mars and Jupiter being in Aries trine the Ascendant doesn't hurt!)

2nd/Virgo: Mercury is Domicile Lord, but we find him in Aries, which is *unconfigured* to Virgo. Mercury is also the Exaltation Lord for Virgo, so ditto. So the *financial affairs of this royal marriage start off on shaky ground*. The Trigonal Lords provide no help either - Trigonal Lords for Virgo are Venus and Saturn; Saturn in the chart is in Libra, *in aversion* to Virgo, while Venus is in Aries, *also in aversion* and *unconfigured*.

In this case we might default then to the Sect Light - which is the Sun in this case as he is above the horizon in this diurnal chart. The Sun is *powerful* in the 10th and is in a trigon/trine to the 2nd house. *Financial affairs for this marriage might be a bit messy, ultimately reverting back and relying on the English monarchy (the Sun) for stable support.*

3rd/Libra: Venus is Domicile Lord for Libra; in this chart Venus is in Aries in opposition to Libra. Venus in Aries though is in

Anti-Domicile and is therefore *somewhat unreliable and undependable* as she really *doesn't want to deal with any responsibilities*. Saturn is the Exalted Lord for Libra and we find Saturn posited in Libra, which combined with a weak Venus as domicile lord puts Saturn in the *driver's seat* as regards the third house. Saturn possibly gives this marriage *a structured environment and surroundings with responsibilities at home* that Will and Kate will *constantly seek to escape* through the ninth house Venus.



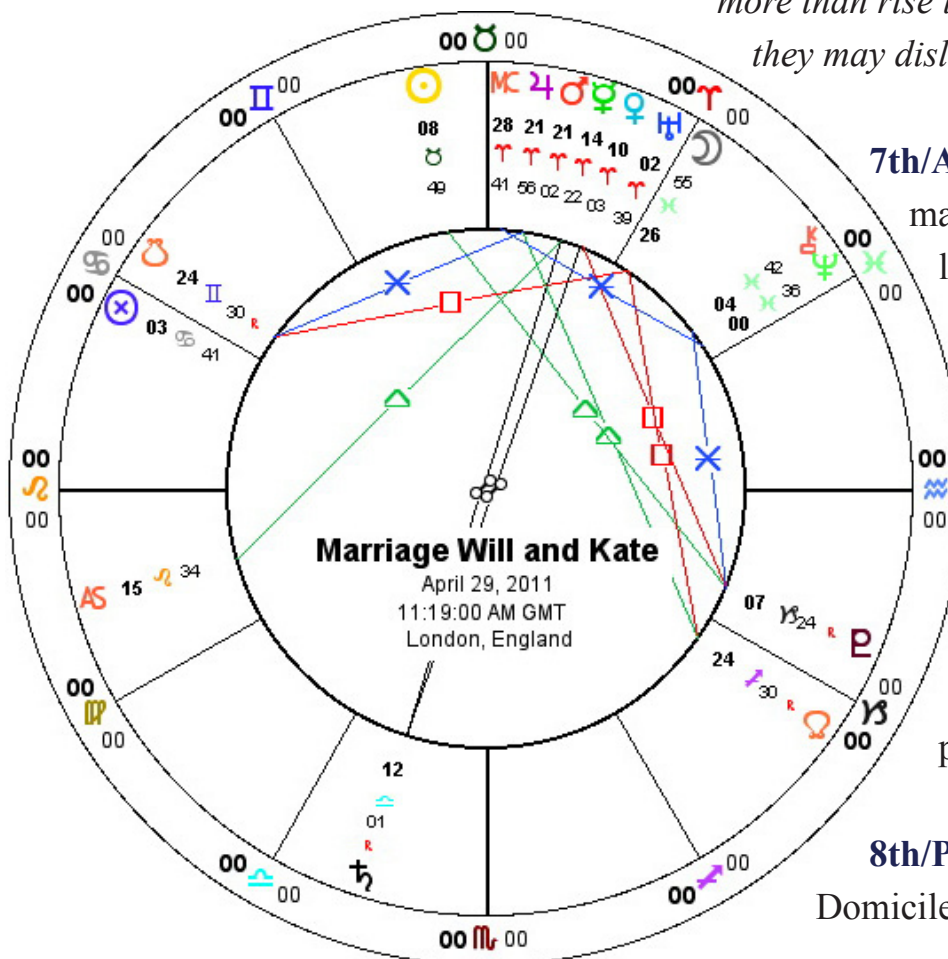
HERMES HALF-HOUR



4th/Scorpio: Mars is domicile lord, but being in Aries he *cannot see* Scorpio. There is no Exaltation Lord for Scorpio, so we're forced to turn to the Trigonal Lords Moon and Jupiter. Jupiter also is in Aries and *cannot interact* with the 4th house Scorpio. That leaves the Moon in Pisces in the 8th in a trigonal relationship to the 4th. This suggests a *emotional reverence for the past, for traditions, for family*, which in this case is the royal family. This will *not be readily apparent to the outside world* as the Moon is in the *hidden and private* 8th house.

5th/Sagittarius: Sagittarius is ruled by the *ebullient* Jupiter in Aries in the 9th. This couple will *like to travel to unfamiliar, faraway places for philosophical, political and philanthropic purposes* - perhaps much like Prince William's late mother Diana.

6th/Capricorn: This house's Lord is Saturn in Libra from the 3rd, squaring the 6th. *Duties and responsibilities may weigh heavy* on this couple while at the same time *defining* them. Saturn's square will also *weigh heavy* on the royal couple; however, Saturn being in Libra shows that they will *more than rise to the occasion, as much as they may dislike it*.



7th/Aquarius: The house of marriage is in a trigon with its lord, once again Saturn from the 3rd. This might suggest that Prince William's *brother* Prince Harry will be *quite close to the couple* - and that *everyday responsibilities may come to define the marriage* - the couple's personal preferences notwithstanding.

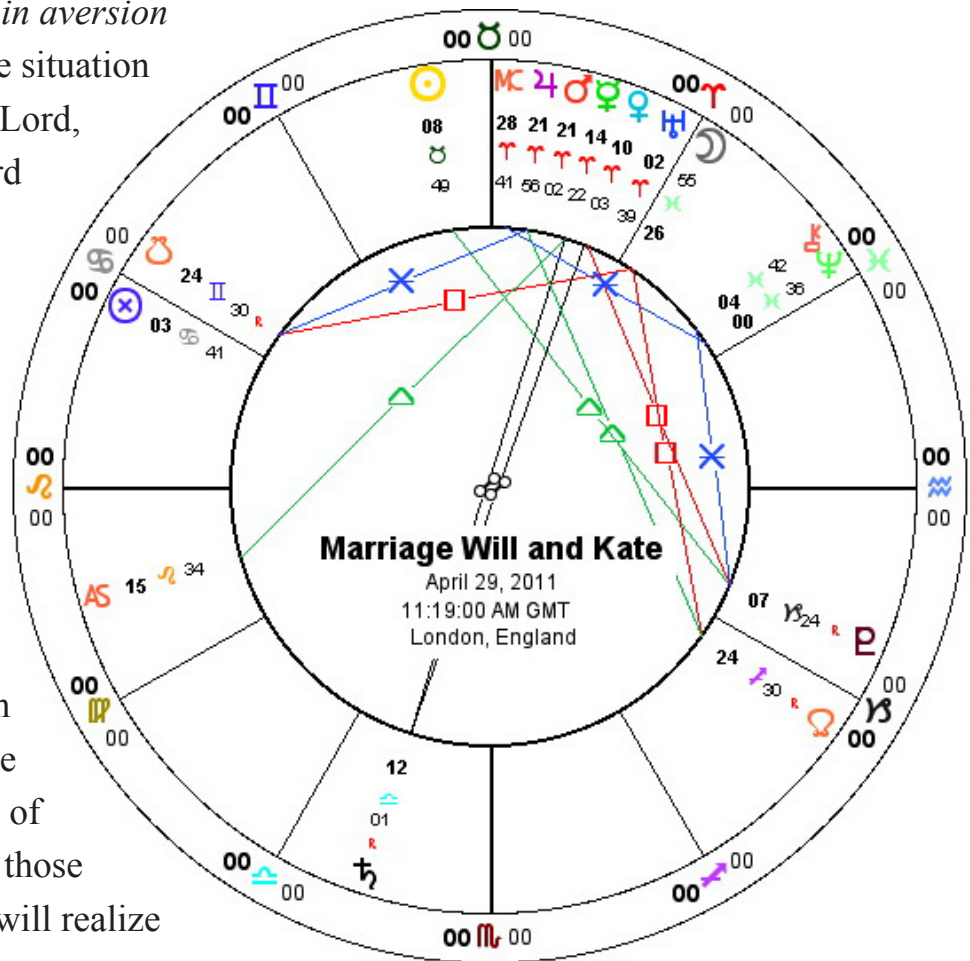
8th/Pisces: Jupiter is the Domicile Lord of the 8th, but *cannot*



engage with the 8th as he is *in aversion* from the Aries 9th. The same situation characterizes the Exaltation Lord, Venus. Mars as Trigonal Lord is also in Aries! That leaves the final Trigonal Lord the Moon, which is resident in the 8th. This would indicate *deep spiritual connections (involving humility and sacrifice, i.e. for William the keenly felt loss of his mother)* and an *emotional closeness* between Will and Kate. This of course is supported by the presence of Neptune in this house. Only those very close to Will and Kate will realize the depth of their connection.

9th/Aries: This is obviously the *power* house in this chart - and not only because of the Aries stellium plus the MC point. This is because the Domicile Lord Mars is in Aries - and so is in *prime* position to *immediately provide resources needed and demanded* by the stellium and by the MC. Likewise, Jupiter - a Trigonal Lord for Aries, as well as the nocturnal Trigonal Lord - is present also.

10th/Taurus: Venus is the Domicile Lord here, but is *in aversion* from Aries. That



leaves the Moon, which is exalted in Taurus, as the solitary Lord looking after the 10th, as the Trigonal Lords for Taurus are *in aversion* in this chart - Mercury in aversion from Aries, and Saturn in aversion from Libra. With the Sun in Taurus resident in the 10th, it portends that *William will be much more visible* in this marriage, while *Kate remains behind the scenes somewhat*.

11th/Gemini: Mercury manages this house from Aries in the 9th. There is a lot of activity in the 9th, including one of Gemini's Trigonal Lords Venus. As the 11th shows

HERMES HALF-HOUR



rewards coming from professional activities and social standing this suggests that Will and Kate will *benefit greatly* from their 9th house *activism* - and not only financially!

12th/Cancer: The Moon is Lord from the Pisces 8th, in a trigonal relationship. Will and Kate will find their *emotional refuge* and *solace* in each other. Interestingly, the Lot of Fortune is in the Cancer 12th; in the Fortune chart (where you put the Lot of Fortune's sign in the 1st place or house) it's Domicile Lord the Moon is 9th from Fortune, *echoing and reinforcing the 9th house activity* we see in the natal 9th!

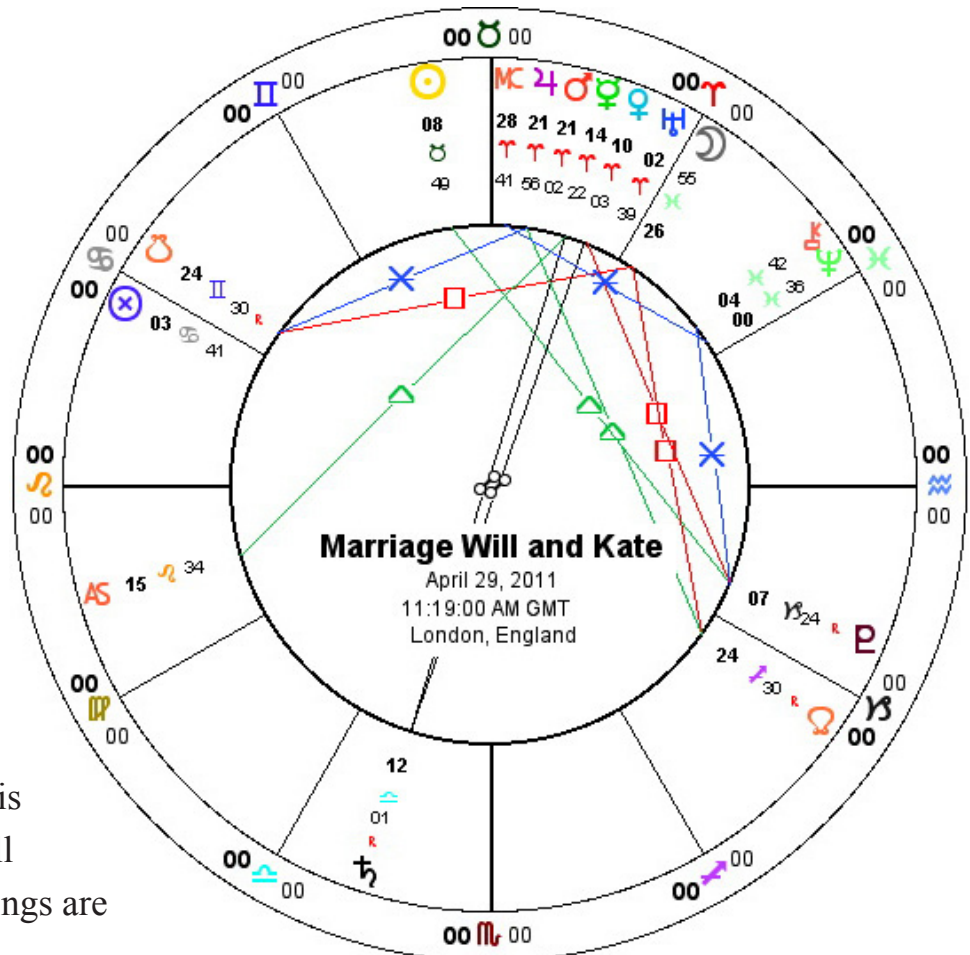
immediately noticeable.

1) All the Confine Lords for the Ascendant through Saturn are found in Aries in the 9th, while the lone holdout - the Ascendant - has its Confine Lord in Saturn, opposing the Aries 9th from the Libra 3rd. This gives the immediately noticeable opposition pitting Saturn against the Aries stellium *a weight of internalized principle* for Will and Kate. They will *like to travel* and they will *like to engage in activism*, but for them it will be deeper - *the principle of the matters they investigate and discover will be paramount*

WILL AND KATE'S CONFINELORDS

Ascendant: Saturn
 Sun: Mercury
 Moon: Mars
 Mercury: Mercury
 Venus: Venus
 Mars: Mars
 Jupiter: Mars
 Saturn: Mercury

While this won't be a complete, exhaustive analysis of the Confine Lords for Will and Kate's marriage, two things are





for this royal couple.

2) Mercury, Venus and Mars are found in their own Confines. This is especially potent for Mars who is also found in his own Domicile. Planets in their own Confines are much more *autonomous* - they are *not beholden* to any other planet for their operating principles, or for the way the conduct business. This means they'll *get more done*, but it also means that *they alone are responsible for the consequences*, especially Mars! (At least Venus and Mercury can point to Mars as their Domicile

Lord when the going gets rough!) Mercury in Aries sometimes *speaks too quickly*; Venus in Aries is *naturally averse to any kind of Venusian responsibilities*. However, ***the buck will always stop for Will and Kate at Mars in Aries in the 9th***. And being in his own Domicile and his own Confines (conjunct the Aries Trigon Lord Jupiter) *Mars is more than up to the task of shouldering responsibility. Will, Kate and their marriage will accomplish much!*

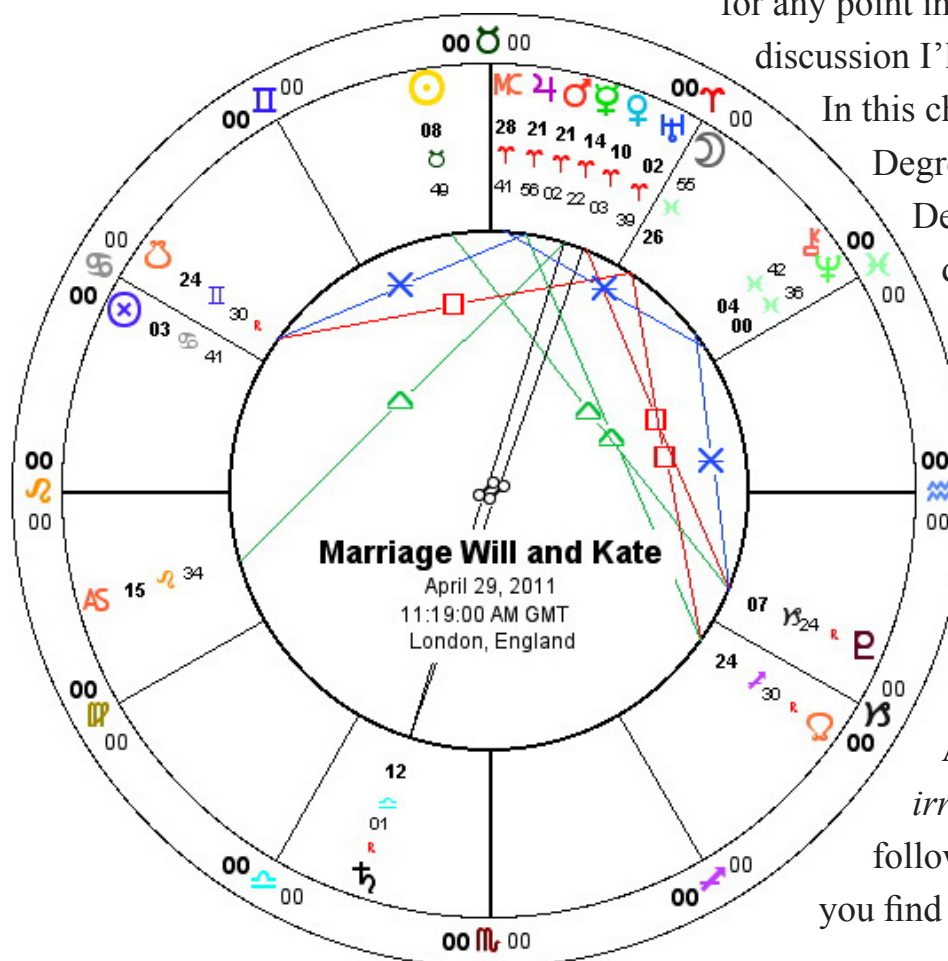
MONOMOIRA

While in theory one can examine Monomoira for any point in the horoscope, for this discussion I'll begin with the Ascendant.

In this chart the Monomoira or Degree Lord for the Ascending Degree (15 Leo 34, so the 16th degree of Leo) is Venus.

One might reasonably infer from this that *the marriage will be quite popular* (the Ascending degree being the *mask* the nativity presents to the outside world...) if not a bit *controversial* (Venus in Aries can be a bit *wild* and *irresponsible...*). However,

following the trail of Monomoira, you find that the Monomoira for



HERMES HALF-HOUR



Venus is in turn Mercury; the Monomoira for Mercury is Mars, as it is also for Mars, Jupiter and the MC point. This gives Mars (already powerful placed) *quite a bit of say* over how the Aries planets are seen by others. Although Venus and to some extent Mercury *have a hand in generating controversy*, it will be Mars who *has the final say*. To this end Will and Kate will be well served by *demonstrating that their actions speak louder than words... or popularity!*

SUMMARY

In summary, it's true that Lordship doctrine is a complex and interrelated discipline that certainly does not lend itself to every chart studied (especially if you're doing

M*A*S*H astrology and have no time for depth study for your clients.) For those charts of intimate importance to the astrologer (or for those clients willing to reimburse the astrologer for his or her in-depth analysis) this doctrine pays unending dividends in understanding the deeper layers of the nativity. Domicile, Exaltation and Trigonal lordships *demonstrate the interaction between planets in handling or managing a particular domicile or house*; Confine Lords *reveal insight into the working principles that mold planets*; Trigon Lords *show the nativity's readiness to respond to motivation*; and Monomoira *provide clues to the metaphysical underpinnings to the planets and points in the nativity, especially the Ascendant!*



HERMES HALF HOUR

WWW.HERMESHALFHOUR.COM

Egyptian Bounds/Lunar Monomoira

Degree/Sign	♈	♉	♊	♋	♌	♍	♎	♏	♐	♑	♒	♓
00 - 01	♂♂	♀♀	♀♀	♂☽	♂☉	♀♀	♂♀	♂♂	♂♂	♀♂	♀♂	♀♂
01 - 02	♂☉	♀♀	♀☽	♂♂	♂♀	♀☽	♂♀	♂☉	♂♂	♀♂	♀♂	♀♂
02 - 03	♂♀	♀☽	♀♂	♂♂	♂♀	♀♂	♂☽	♂♀	♂☉	♀♂	♀♂	♀☉
03 - 04	♂♀	♀♂	♀♂	♂♂	♂☽	♀♂	♂♂	♂♀	♂♀	♀☉	♀☉	♀♀
04 - 05	♂☽	♀♂	♀♂	♂☉	♂♂	♀♀	♂♂	♂☽	♂♀	♀♀	♀♀	♀♀
05 - 06	♂♂	♀♂	♀☉	♂♀	♂♂	♀☉	♂♂	♂♂	♂☽	♀♀	♀♀	♀☽
06 - 07	♀♂	♀☉	♂♀	♂♀	♀♂	♀♀	♀☉	♂♂	♂♂	♀☽	♀☽	♀♂
07 - 08	♀♂	♀♀	♂♀	♀☽	♀☉	♀♀	♀♀	♀♂	♂♂	♂♂	♀♂	♀♂
08 - 09	♀☉	♀♀	♂☽	♀♂	♀♀	♀☽	♀♀	♀☉	♂♂	♂♂	♀♂	♀♂
09 - 10	♀♀	♀☽	♂♂	♀♂	♀♀	♀♂	♀☽	♀♀	♂☉	♂♂	♀♂	♀☉
10 - 11	♀♀	♀♂	♂♂	♀♂	♀☽	♀♂	♀♂	♀♀	♂♀	♂☉	♀☉	♀♀
11 - 12	♀☽	♀♂	♂♂	♀☉	♂♂	♀♂	♀♂	♀☽	♂♀	♂♀	♀♀	♀♀
12 - 13	♀♂	♀♂	♀☉	♀♀	♂♂	♀☉	♀♂	♀♂	♀☽	♂♀	♀♀	♂☽
13 - 14	♀♂	♀☉	♀♀	♀♀	♂♂	♀♀	♀☉	♀♂	♀♂	♂☽	♂☽	♂♂
14 - 15	♀♂	♂♀	♀♀	♀☽	♂☉	♀♀	♂♀	♀♂	♀♂	♀♂	♂♂	♂♂
15 - 16	♀☉	♂♀	♀☽	♀♂	♂♀	♀☽	♂♀	♀☉	♀♂	♀♂	♂♂	♂♂
16 - 17	♀♀	♂☽	♀♂	♀♂	♂♀	♀♂	♂☽	♀♀	♀☉	♀♂	♂♂	♀☉
17 - 18	♀♀	♂♂	♂♂	♀♂	♂☽	♂♂	♂♂	♀♀	♀♀	♀☉	♂☉	♀♀
18 - 19	♀☽	♂♂	♂♂	♀☉	♀♂	♂♂	♂♂	♀☽	♀♀	♀♀	♂♀	♀♀
19 - 20	♀♂	♂♂	♂☉	♂♀	♀♂	♂☉	♂♂	♂♂	♀☽	♀♀	♂♀	♂☽
20 - 21	♂♂	♂☉	♂♀	♂♀	♀♂	♂♀	♂☉	♂♂	♀♂	♀☽	♂☽	♂♂
21 - 22	♂♂	♂♀	♂♀	♂☽	♀☉	♂♀	♀♀	♂♂	♂♂	♀♂	♂♂	♂♂
22 - 23	♂☉	♂♀	♂☽	♂♂	♀♀	♂☽	♀♀	♂☉	♂♂	♂♂	♂♂	♂♂
23 - 24	♂♀	♂☽	♂♂	♂♂	♀♀	♂♂	♀☽	♂♀	♂☉	♂♂	♂♂	♂☉
24 - 25	♂♀	♂♂	♂♂	♂♂	♂☽	♂☽	♀♂	♂♀	♂♀	♂☉	♂☉	♂♀
25 - 26	♂☽	♂♂	♂♂	♂☉	♂♂	♂♂	♀♂	♂☽	♂♀	♂♀	♂♀	♂♀
26 - 27	♂♂	♂♂	♂☉	♂♀	♂♂	♂☉	♀♂	♂♂	♂☽	♂♀	♂♀	♂☽
27 - 28	♂♂	♂☉	♂♀	♂♀	♂♂	♂♀	♀☉	♂♂	♂♂	♂☽	♂☽	♂♂
28 - 29	♂♂	♂♀	♂♀	♂☽	♂♀	♂♀	♂♀	♂♂	♂♂	♂♂	♂♂	♂♂
29 - 30	♂☉	♂♀	♂☽	♂♂	♂♀	♂☽	♂♀	♂☉	♂♂	♂♂	♂♂	♂♂